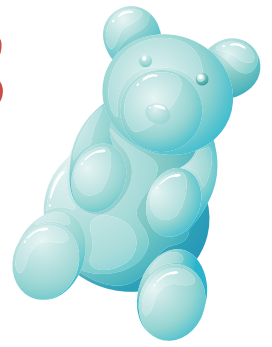




Gummy Bears Soda Pops



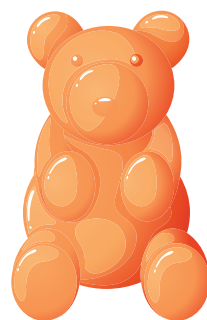
Ingredients

Gummy Bear Candy
Sprite Soda



Directions

1. Using popsicle stand, fill containers with gummy bears.
2. The fill with sprite soda.
3. Leave in freezer for two hours.
4. Take out and enjoy on a hot day!



#PLAYGABLESATHOME
GABLESRECREATION.COM