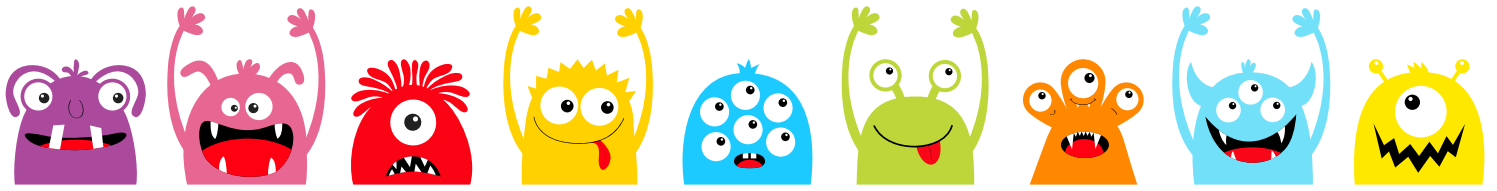


# Monster Juice Box Art Project



## Materials:

- Juice packaging box
- Glue
- Scissors
- Markers
- Color construction paper
- Pipe cleaners or other decorative materials

## Directions:

- 1) Measure sides of juice box to cut out construction paper accordingly to fit and glue paper on to box.
- 2) Remove one end of box flaps so package can be used to store items.
- 3) Add details to your monster box however you'd like. Remember to add a silly face!

