

5TH FLOOR PLAN AS SHOWN
 3RD & 4TH FLOORS SIMILAR, FOR VARIATIONS
 IN WALLS SEE 1/2 SCALE PLAN.
 3RD FL. PL. - 17719
 4TH FL. - 17720
 5TH FL. - 17721

NOTE:
 ALL CORRIDORS ON 5TH FLOOR TO BE FURRED & ACCESS DOOR PROVIDED.
 ROOM DOORS ON 5TH FLOOR ARE MARKED (X)

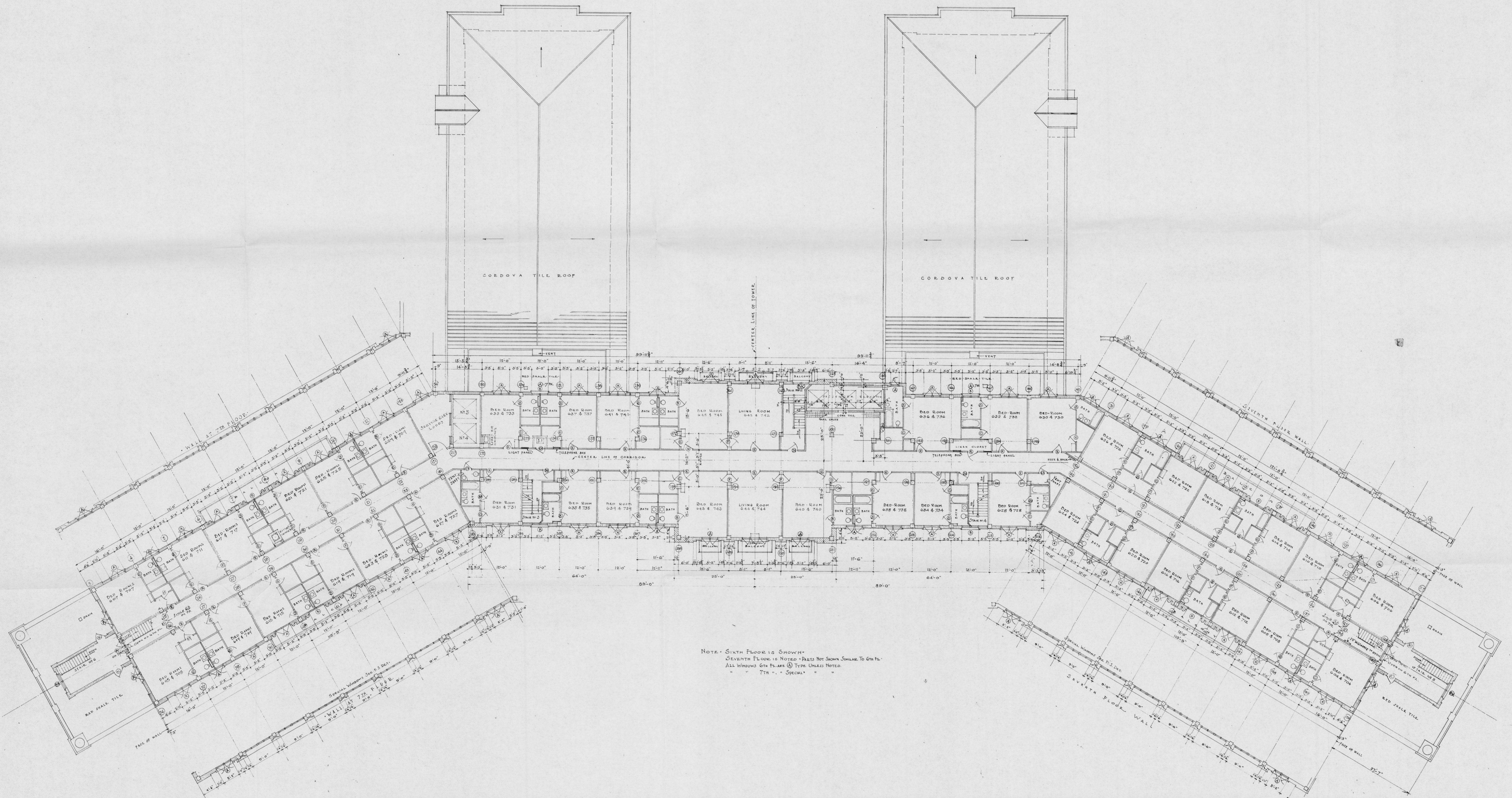
Rev. Nov. 16 - 1925
 Rev. April 4, 1927

PLAN OF THIRD FOURTH AND FIFTH FLOORS

SCALE 1/8" = 1'-0"

MIAMI BILTMORE HOTEL
 CORAL GABLES FLORIDA

Schulze and Weaver
 Architects
 17 EAST 49TH ST. N.Y.C.
 JOB NO. 63 DATE 12/3/24 DRAWING NO. 5



PLANS OF SIXTH & SEVENTH FLOORS

SCALE 1/16" = 1'-0"

MIAMI BILTMORE HOTEL
CORAL GABLES, FLORIDA

Schutte and Weaver
Architects
17 EAST 45th STREET
NEW YORK CITY, N.Y.
Job No 83 DATE 12/31/34 DWG. NO. 6

Review No. 10-1935
May 21, 1935 WINDOW & DOOR TYPES



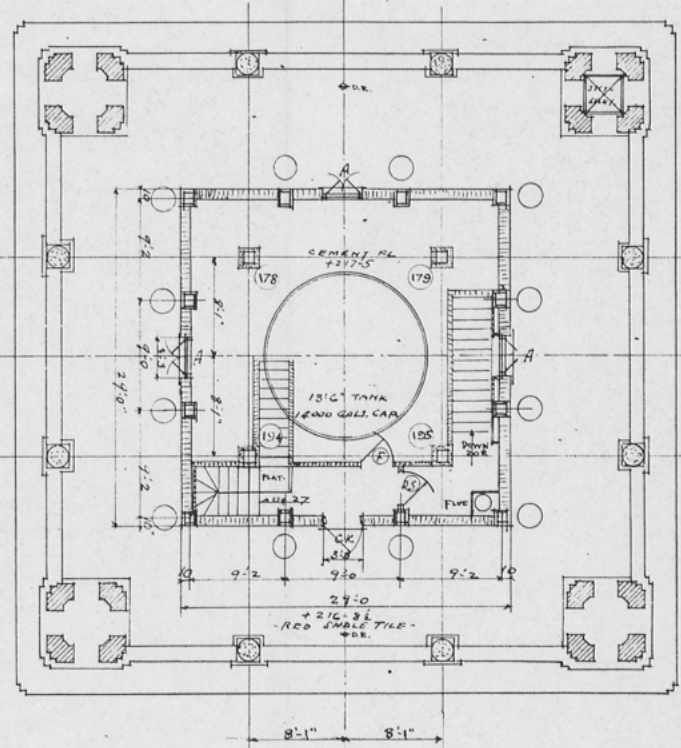
Rev. March 1925
Rev. Nov. 26, 1926

3/4" SCALE DETAIL - 8th, 9th & 10th FLOOR - MAIN BUILDING.

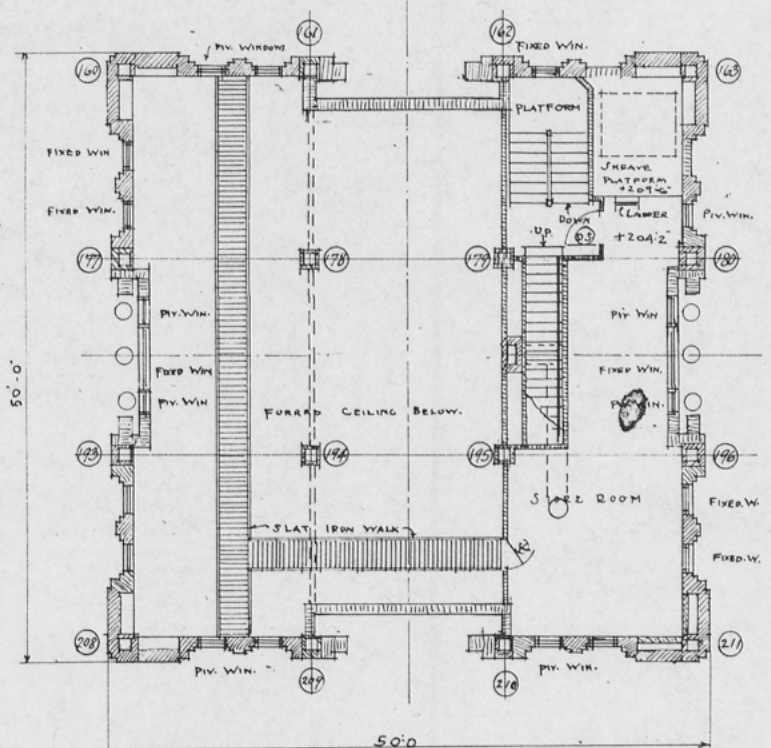
MIAMI BILTMORE HOTEL
CORAL GABLES, FLORIDA

Schulze and Weaver
Architects

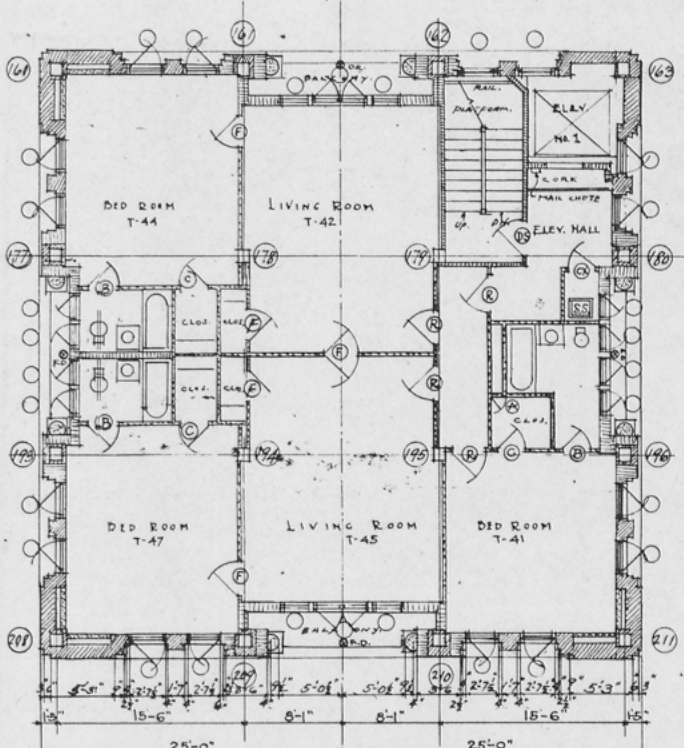
17 EAST 43rd STREET NEW YORK CITY N.Y.
JOB NO. 83 DATE 12.21.24 DRAWING NO.



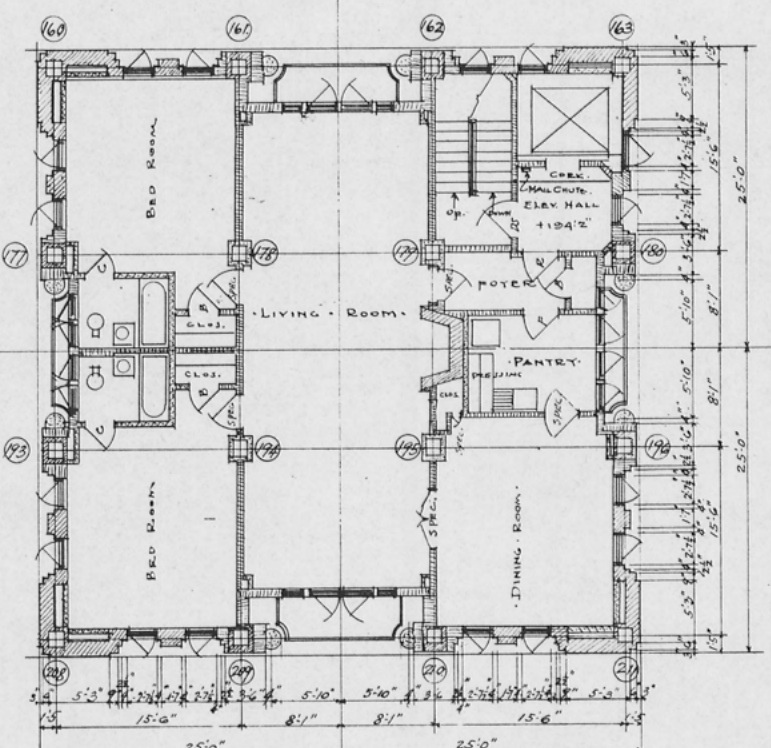
• PLAN OF TANK FLOOR +217'-5"
AND
• FIRST TOWER TERRACE +216'-8"



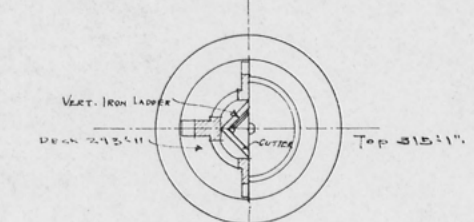
• PLAN OF 6TH TOWER FLOOR +204'-2"
• DIMENSIONS QUOTED JANUARY 5TH FLOOR PLAN



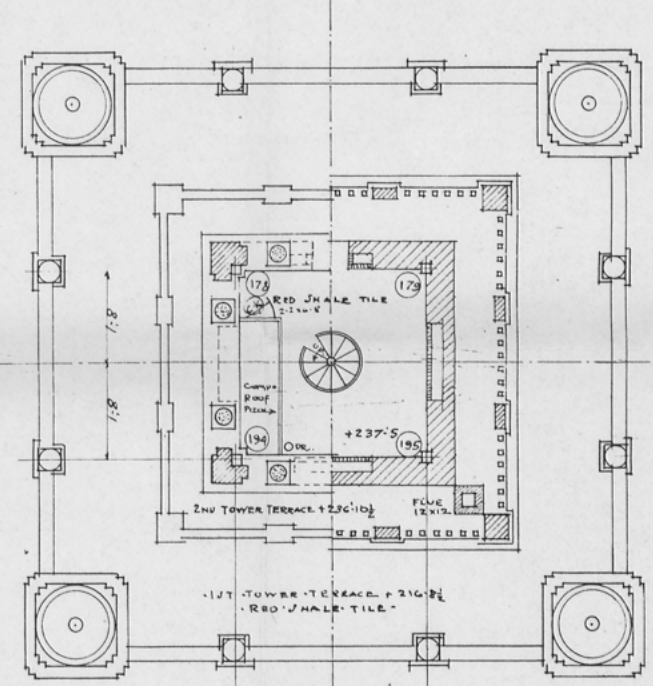
• PLAN OF 4TH TOWER FLOOR - ELEV. +184'-2"
• ALL WINDOWS IN THIS FLOOR ARE SPECIAL



• PLAN OF 5TH TOWER FLOOR
• ELEVATIONS +194'-2"
• SEE DWG. NO. 18

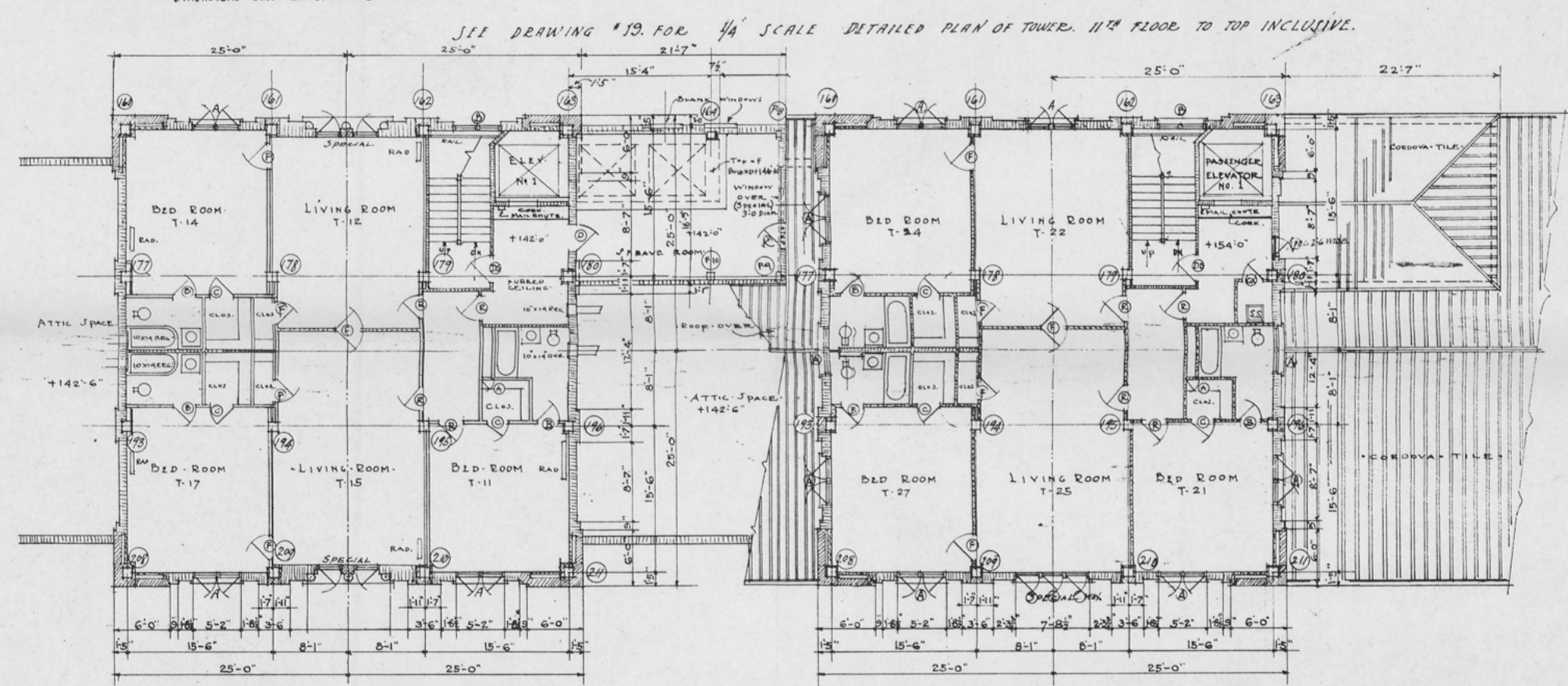


HALF PLAN OF LANTERN & DOME



• PLAN OF FIRST BALCONY FLOOR - ELEV. +237'-5"
AND
• SECOND TOWER TERRACE
+236'-10"

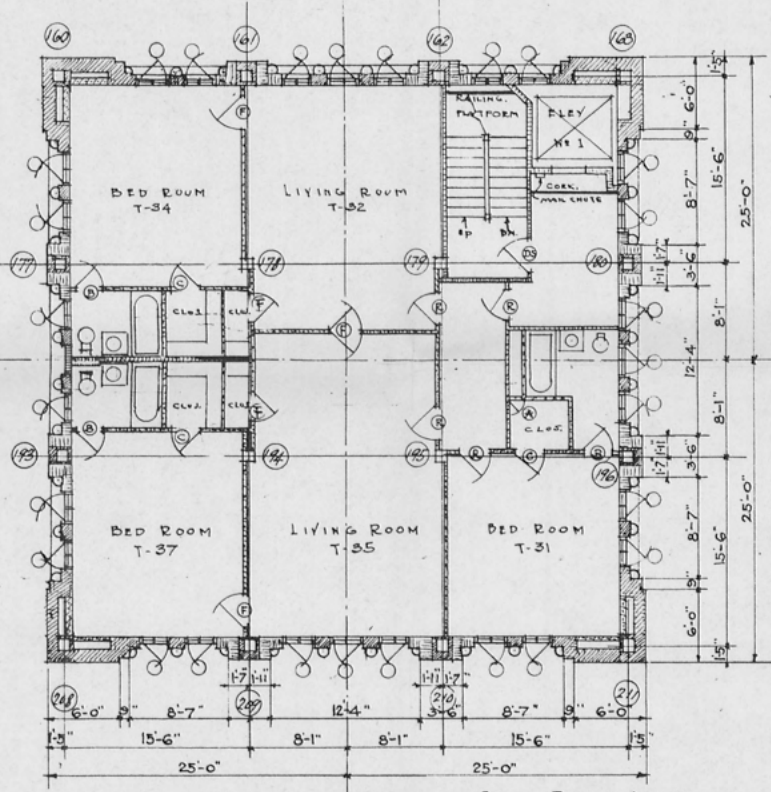
(SEE DWG. NO. 19 FOR 1/4" SCALE TOWER PLAN)



PLAN OF 1ST TOWER FLOOR (11TH FLOOR)
- ELEV. +142'-0"

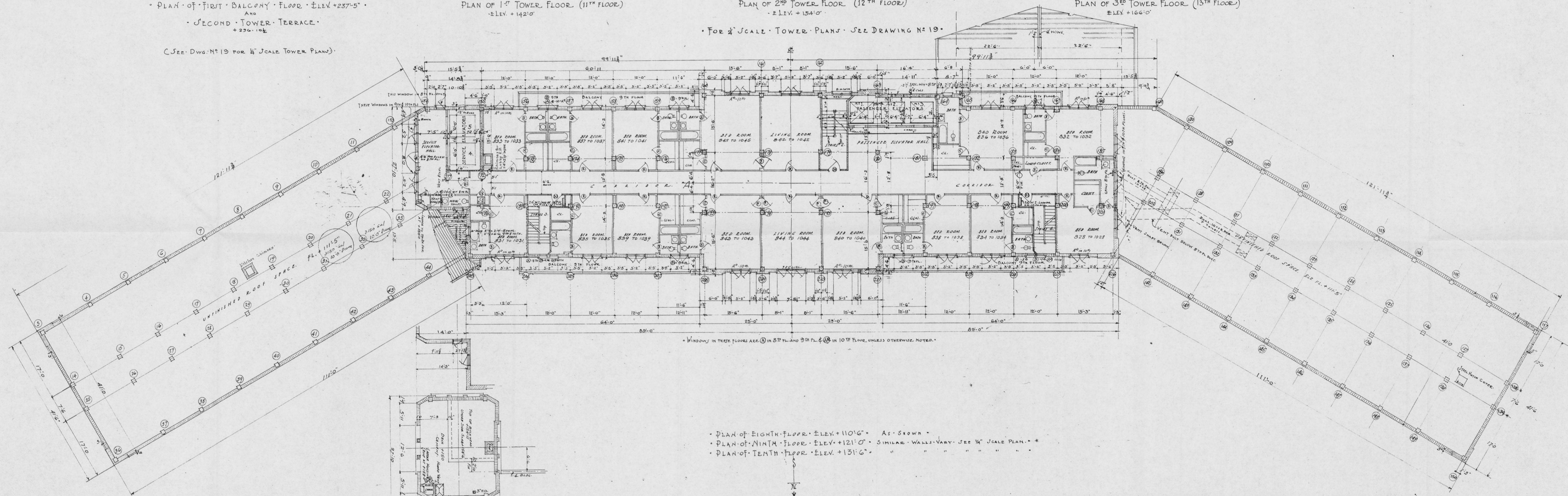
PLAN OF 2ND TOWER FLOOR (12TH FLOOR)
- ELEV. +154'-0"

• FOR 1/4" SCALE TOWER PLANS - SEE DRAWING NO. 19



PLAN OF 3RD TOWER FLOOR (13TH FLOOR)
ELEV. +166'-0"

• ALL WINDOWS IN THIS FLOOR ARE SPECIAL TYPE 2-7/8" WIDE



• PLAN OF EIGHTH FLOOR - ELEV. +110'-0" AS SHOWN
• PLAN OF NINTH FLOOR - ELEV. +121'-0" SIMILAR WALLS VARY - SEE 1/4" SCALE PLAN
• PLAN OF TENTH FLOOR - ELEV. +131'-0"

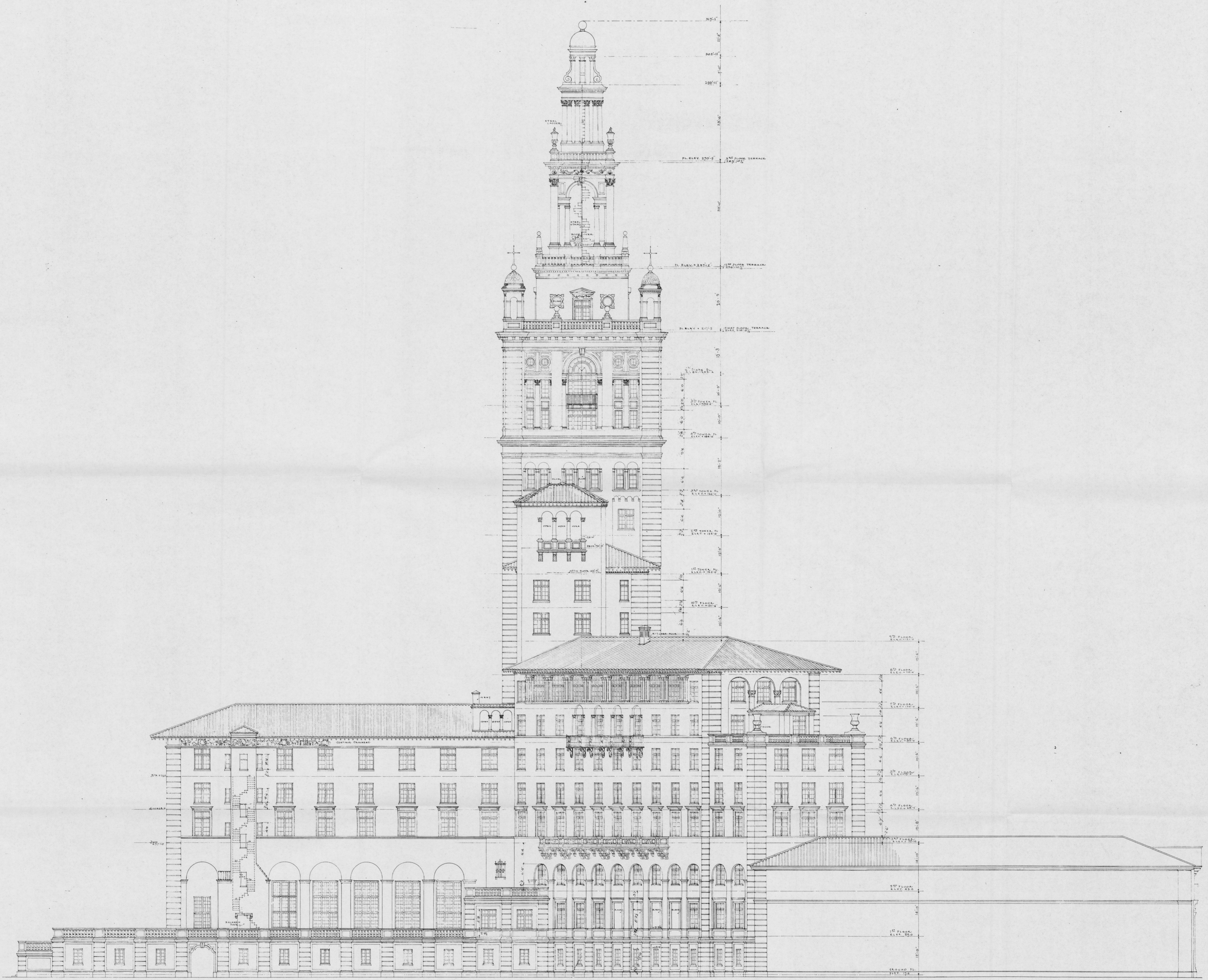
PLANS OF EIGHTH NINTH TENTH AND TOWER FLOORS

SCALE 1/8" = 1'-0"

Revised March 10, 1925
May 11, 1925 3/4" BALCONY PLAN

MIAMI BILTMORE HOTEL
CORAL GABLES, FLORIDA

Schulze and Weaver
Architects
17 EAST 49TH STREET, NEW YORK - CITY, N.Y.
JOB NO. 83 DATE 12/3/24 DRAWING NO. 17



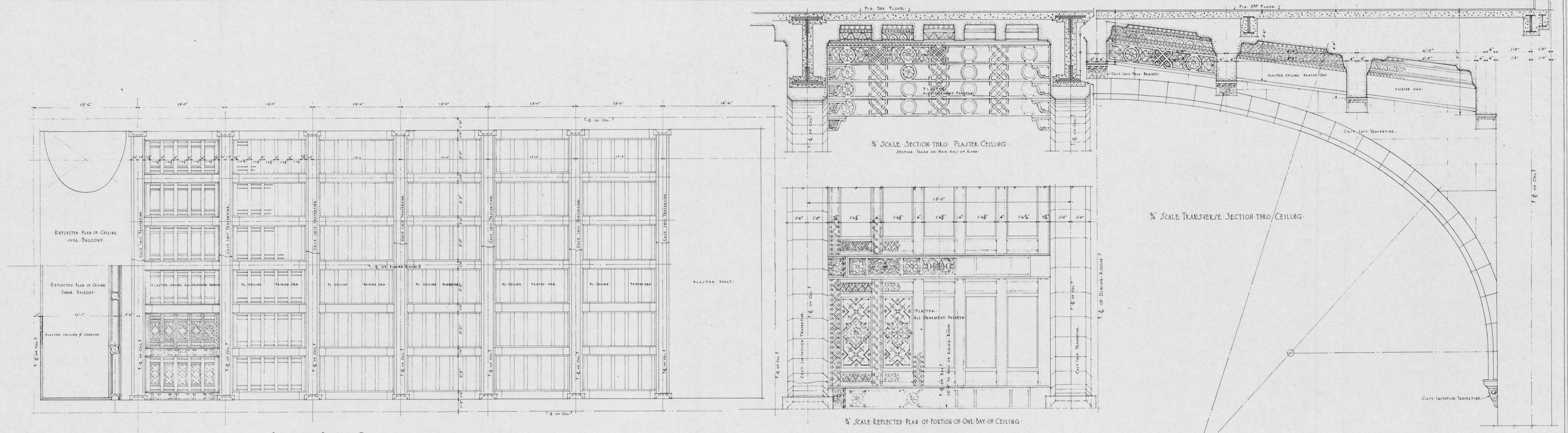
Revised Plan 10-1925
 Nov. 21-1925 115-115-115-115

• EAST • ELEVATION •

SCALE 1/8" = 1'-0"

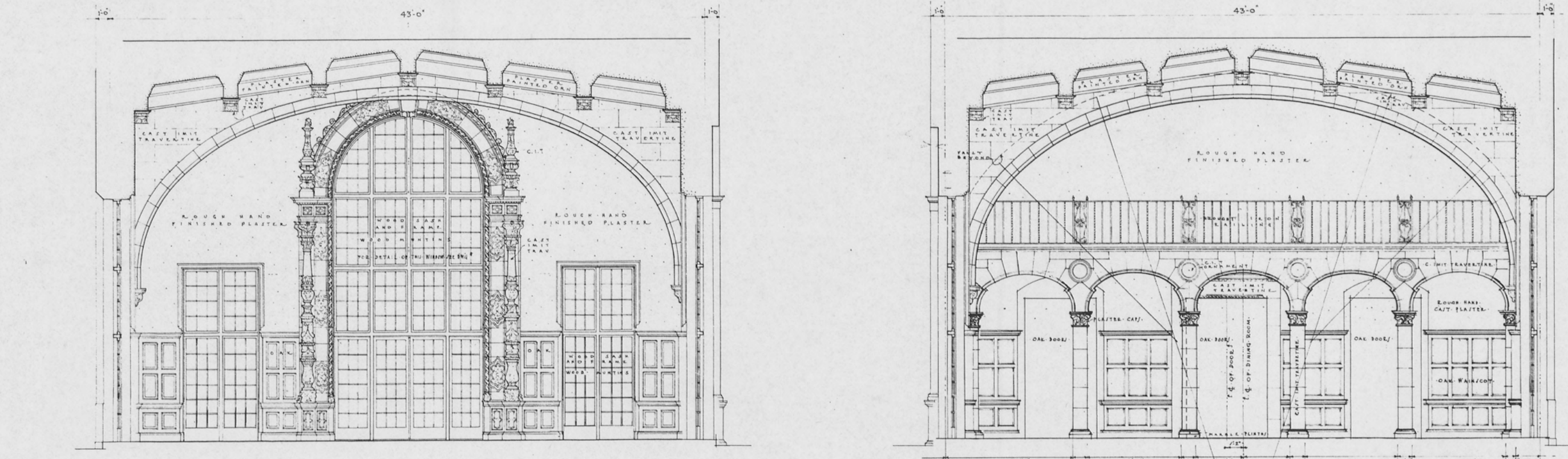
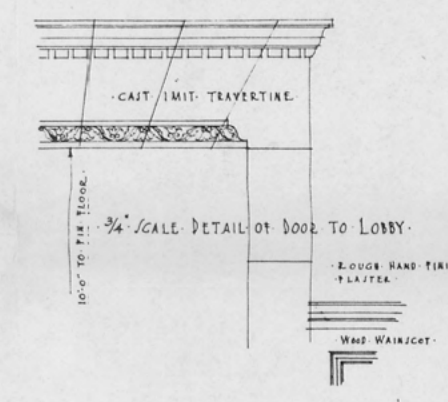
MIAMI BILTMORE HOTEL
 CORAL GABLES, FLORIDA

Schulze and Weaver
 Architects
 17 EAST 49th STREET, NEW YORK CITY, N.Y.
 JOB No. 63 DATE 12/15/24 DRAWING No. 9



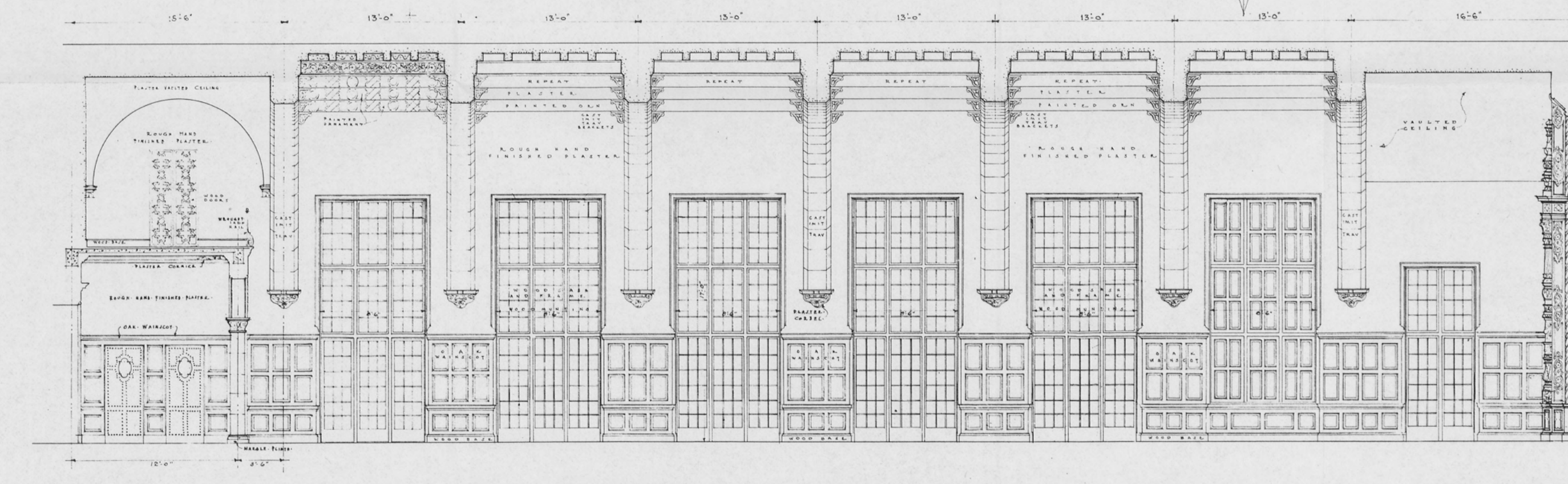
REFLECTED PLAN OF CEILING.

3/4 SCALE REFLECTED PLAN OF PORTION OF ONE BAY OF CEILING.



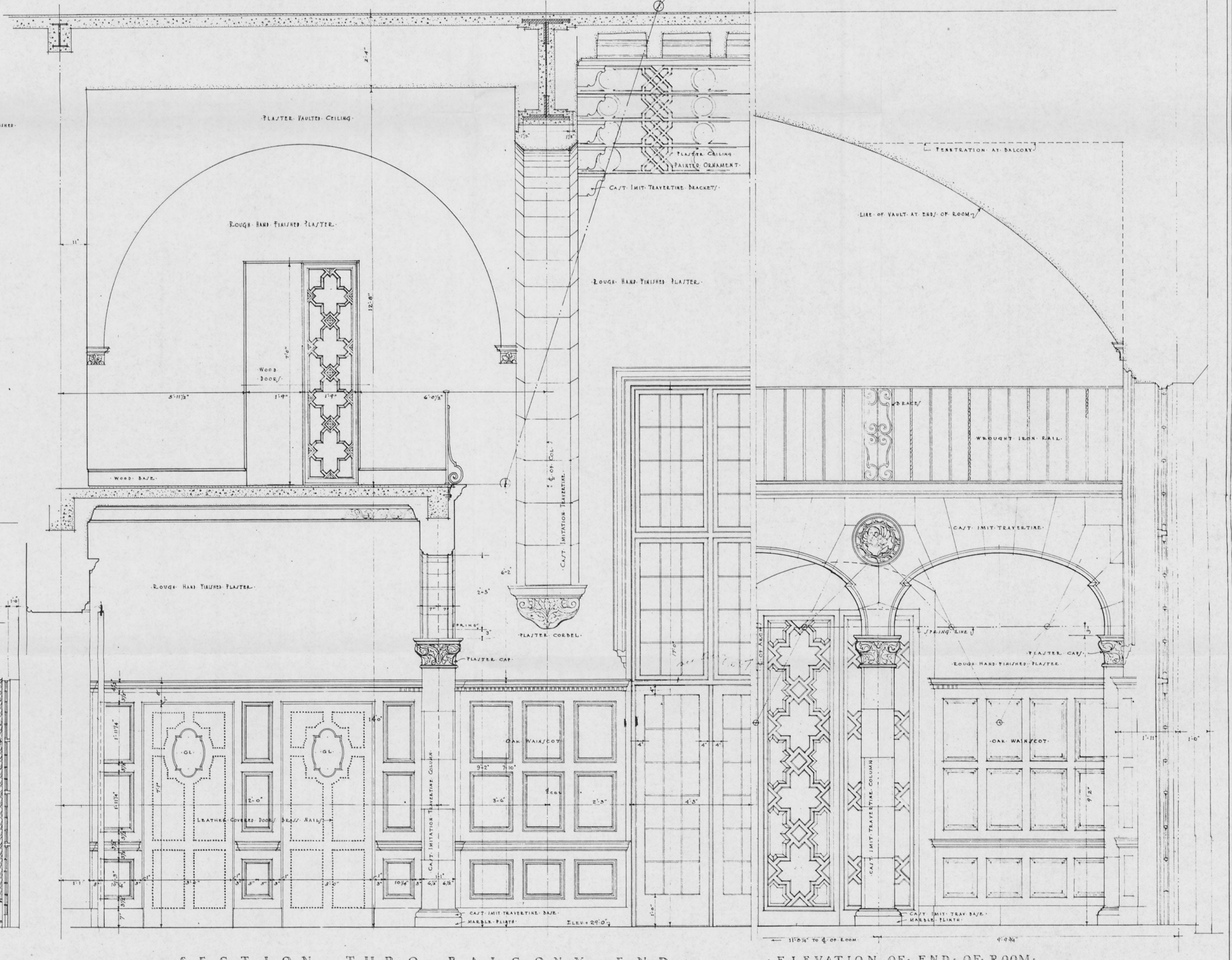
SOUTH ELEVATION.

NORTH ELEVATION.



EAST ELEVATION.

NOTE WEST ELEVATION SIMILAR IN DETAIL.



SECTION THRO BALCONY END.

ELEVATION OF END OF ROOM.

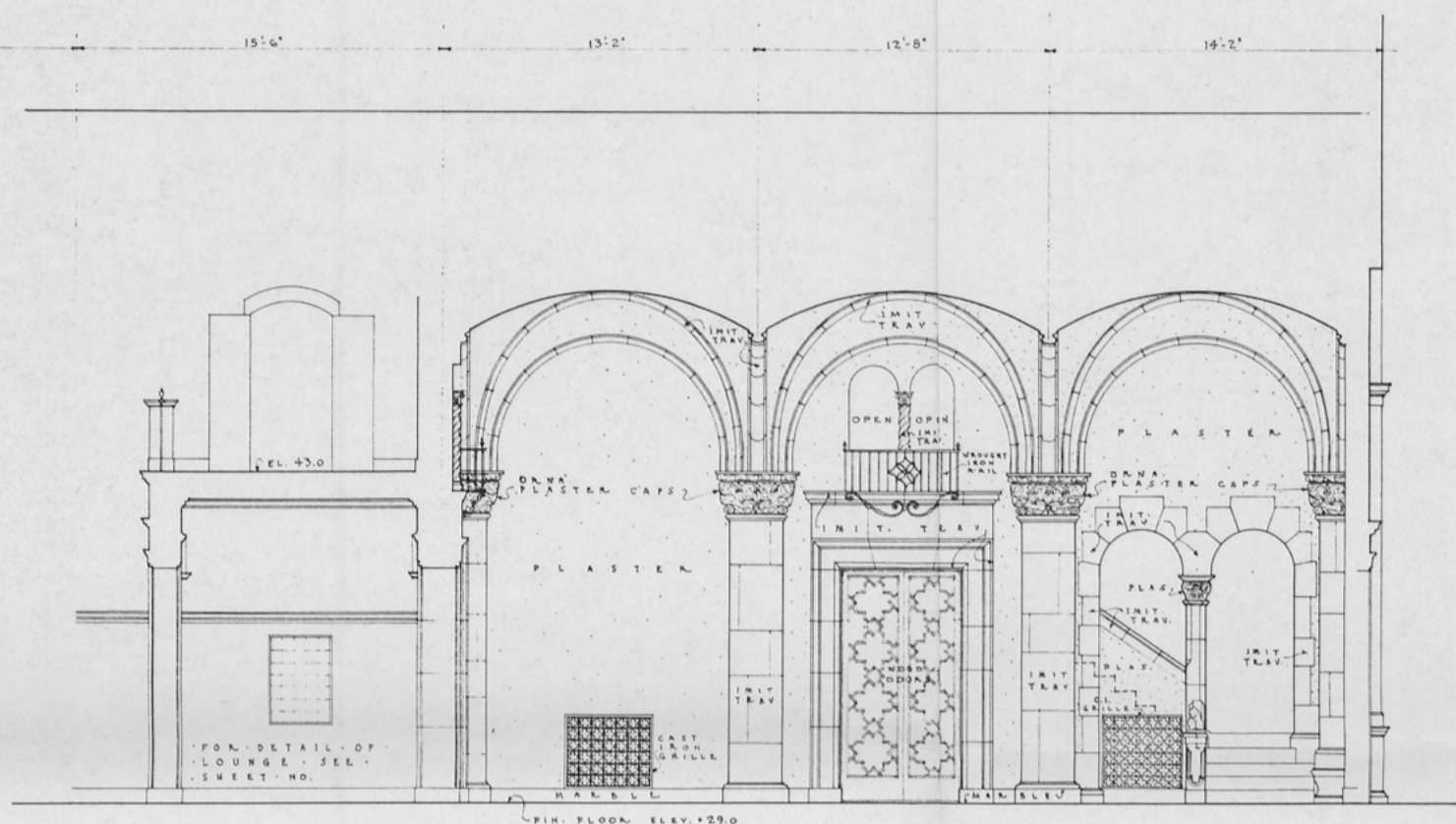
Revised March 1925

ELEVATIONS AND DETAILS OF DINING ROOM ON FIRST FLOOR

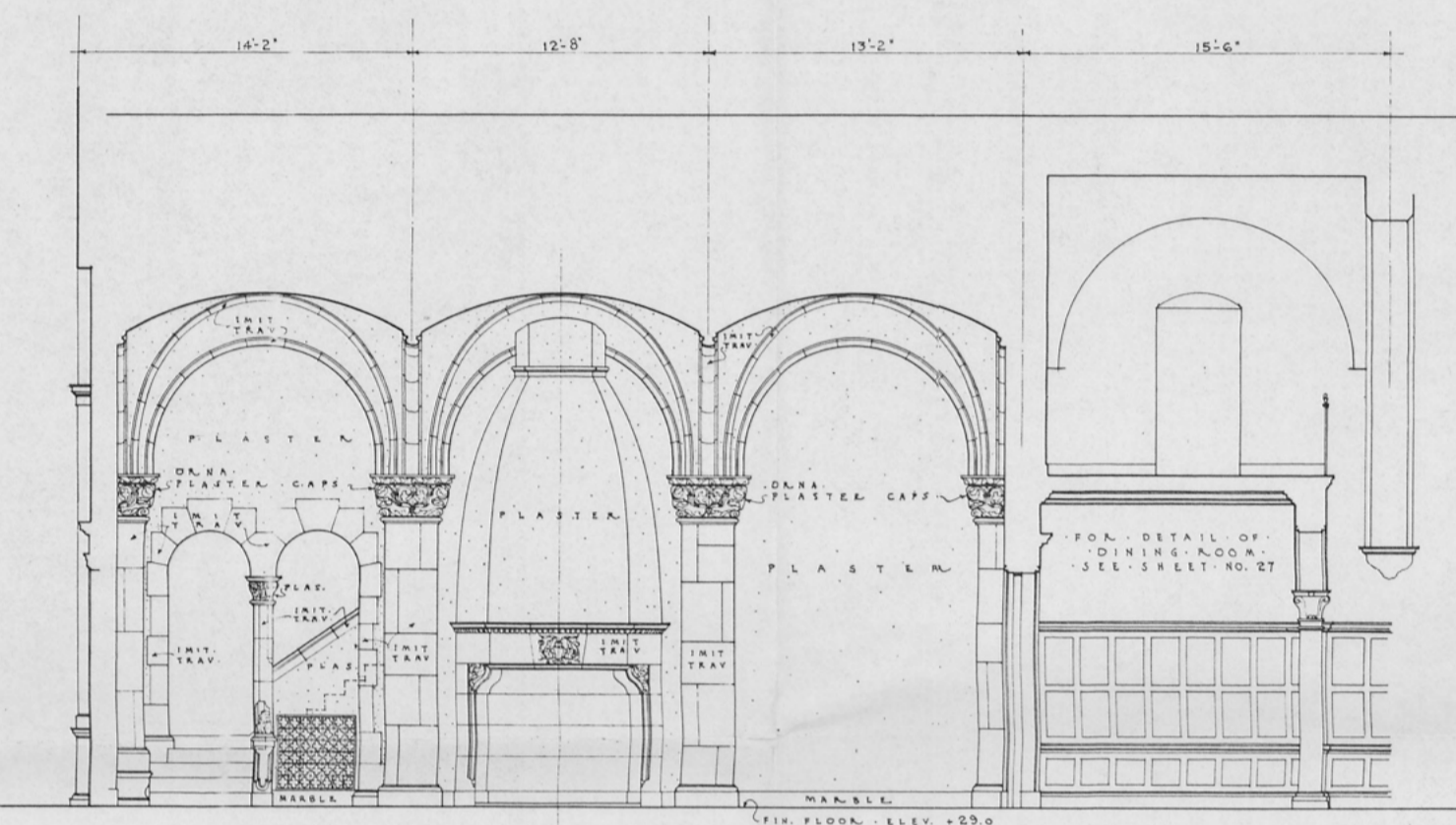
PLAN & ELEVATIONS 1/2" SCALE - DETAILS 3/8" SCALE

MIAMI BILTMORE HOTEL
CORAL GABLES, FLORIDA

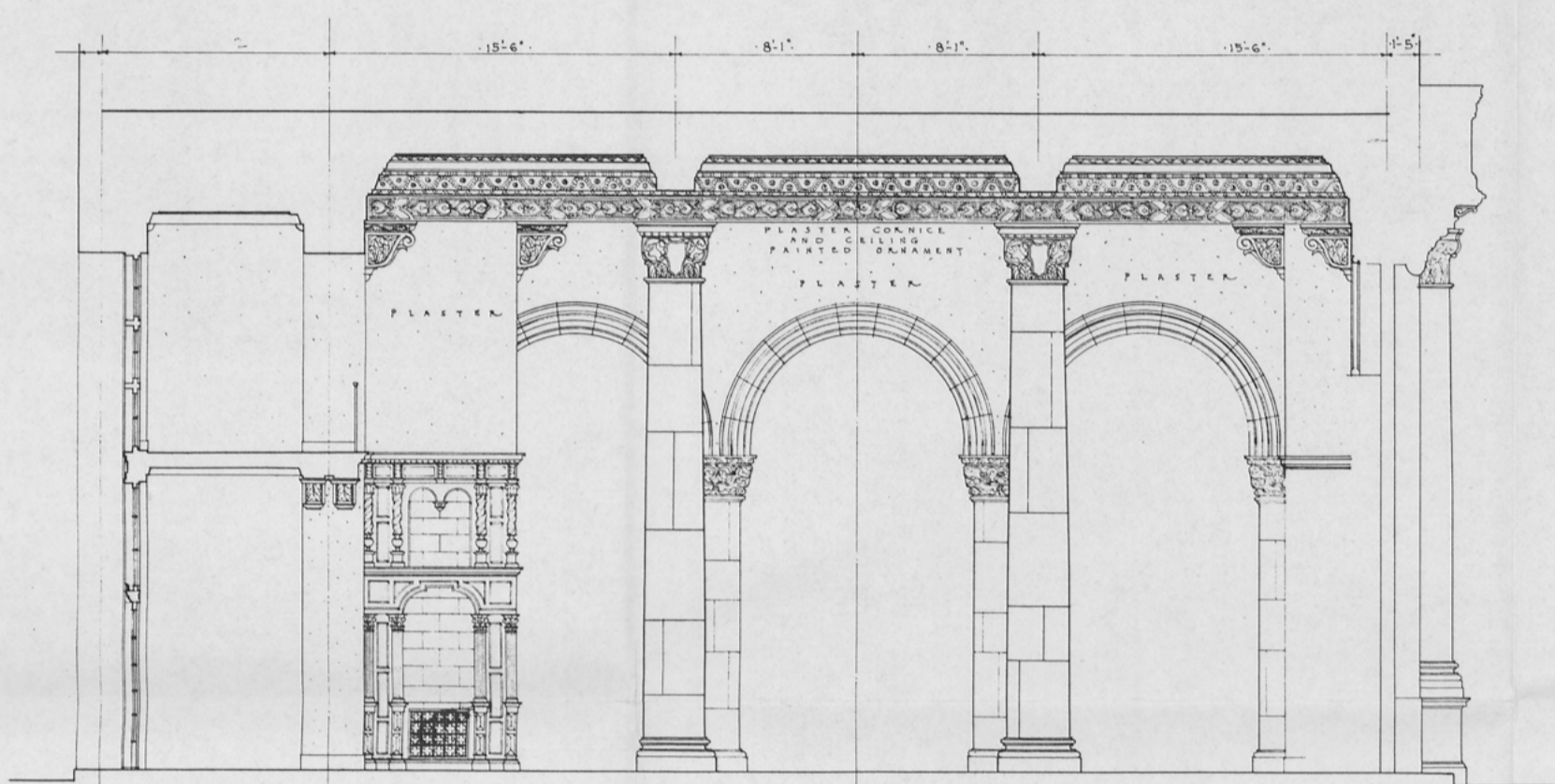
Schultze and Weaver
Architects
17 EAST 49th STREET, NEW YORK CITY, N.Y.
JOB No 83 DATE 12-3-24 DRAWING No 27



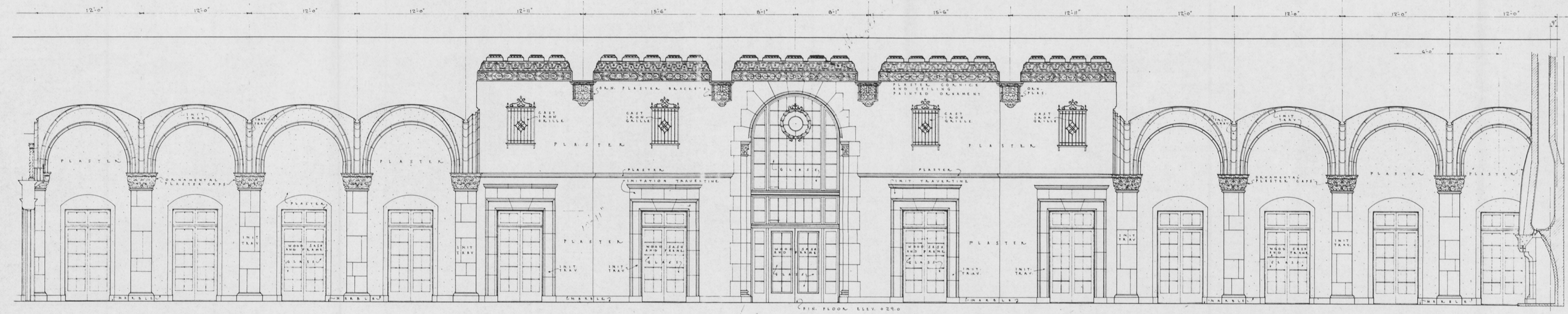
SECTION ON AXIS OF LOUNGE



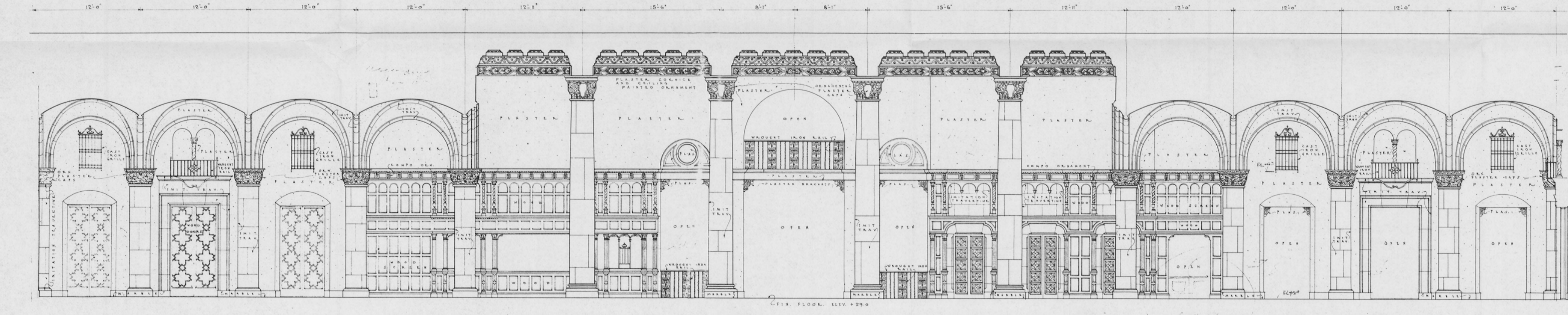
SECTION ON AXIS OF DINING ROOM



CROSS SECTION ON AXIS



ELEVATION LOOKING TOWARDS MAIN ENTRANCE



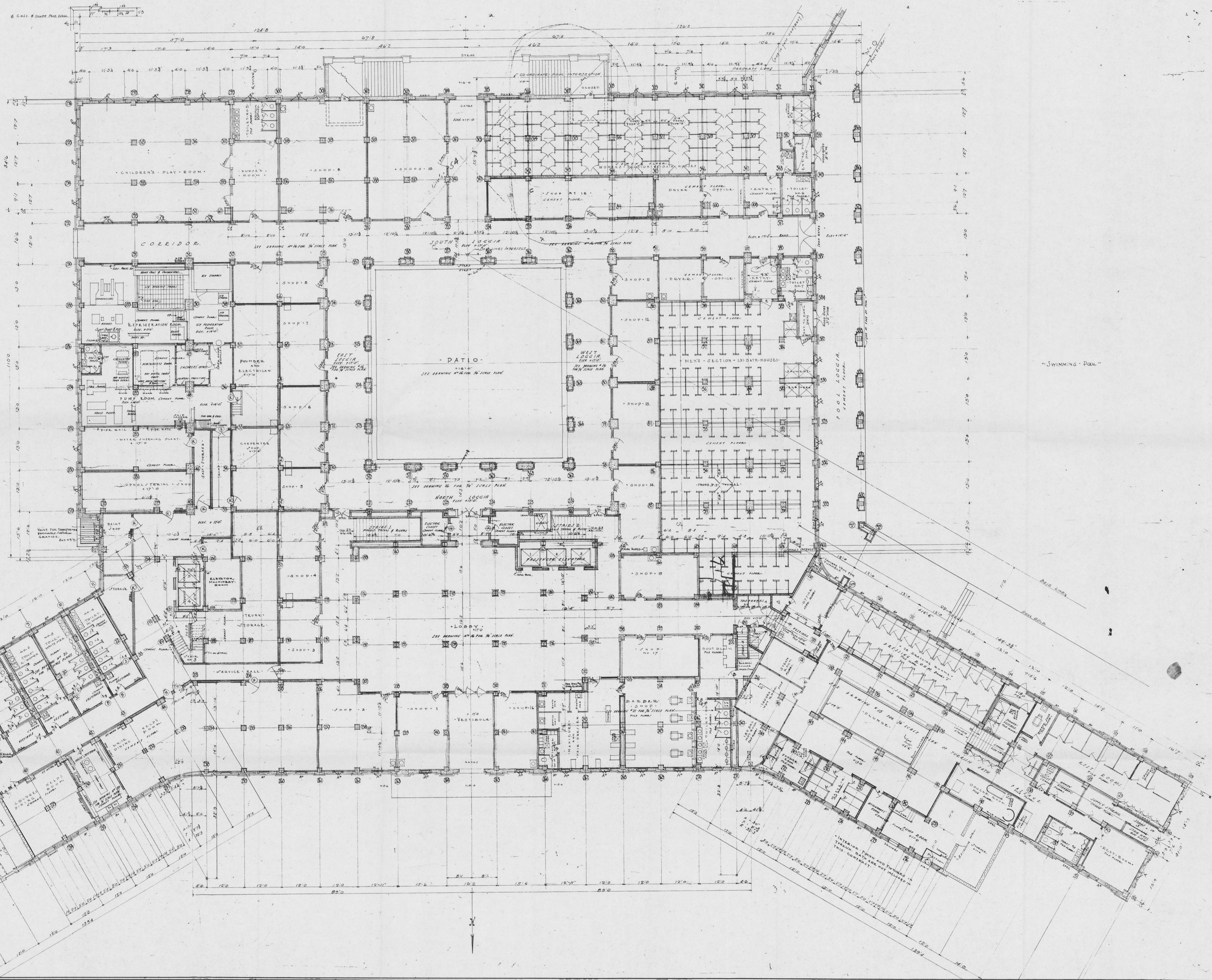
ELEVATION LOOKING TOWARDS PATIO

ELEVATIONS OF MAIN LOBBY

MIAMI BILTMORE HOTEL
CORAL GABLES, FLORIDA

SCALE 1/4" = 1'-0"

Schulze and Heaver
Architects
17 EAST 49th STREET, NEW YORK CITY, N.Y.
JOB NO. 85 DATE 3/14/25 DRAWING NO. 40

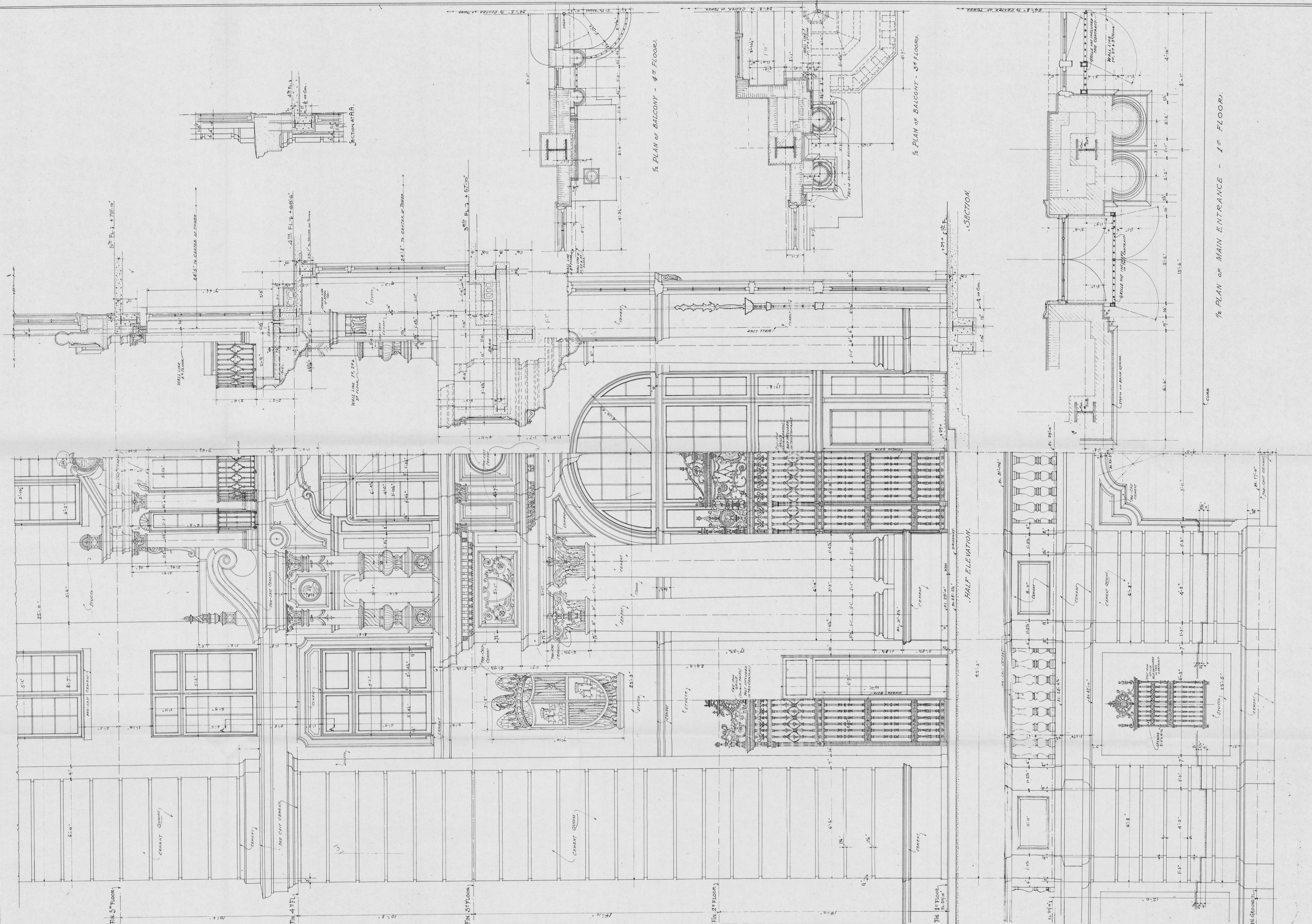


GROUND FLOOR

MIAMI BILTMORE HOTEL
CORAL GABLES, FLORIDA

REVISED MAR. 16, 1935.
FOR 1935. PLAN, 20-1935 (See Also Technical Drawing No. 10000)
REVISED - JUNE 24, 1935 - IN ACCORDANCE WITH ORDINANCE NO. 10000 & 10001
& ORD. NO. 10,471-35.

Schulze and Weaver
Architects
17 EAST 49th STREET - NEW YORK CITY
J-10 N° 05 DATE 12/16/34 DRAWING NO. 2



3/4" SCALE - DETAIL OF MAIN ENTRANCE.

MIAMI BILTMORE HOTEL
CORAL GABLES, FLORIDA.

Schulze and Weaver
Architects
17 EAST 49th STREET, NEW YORK CITY, N.Y.
JOB No 85. DATE: 12/1/24. DRWG. No:

Revised March 1925
Apr. 20, 1926



* Window Heights Same As Opp. Wing.
 * For Tower Details See:
 Dwg. 23 For Gr. to 3rd Fl.
 Dwg. 24 For 5th to 8th Tower Fl.
 Dwg. 25 For 4th Tower Fl. to 1st Balcony.
 Dwg. 26 For 1st Balcony to Top.

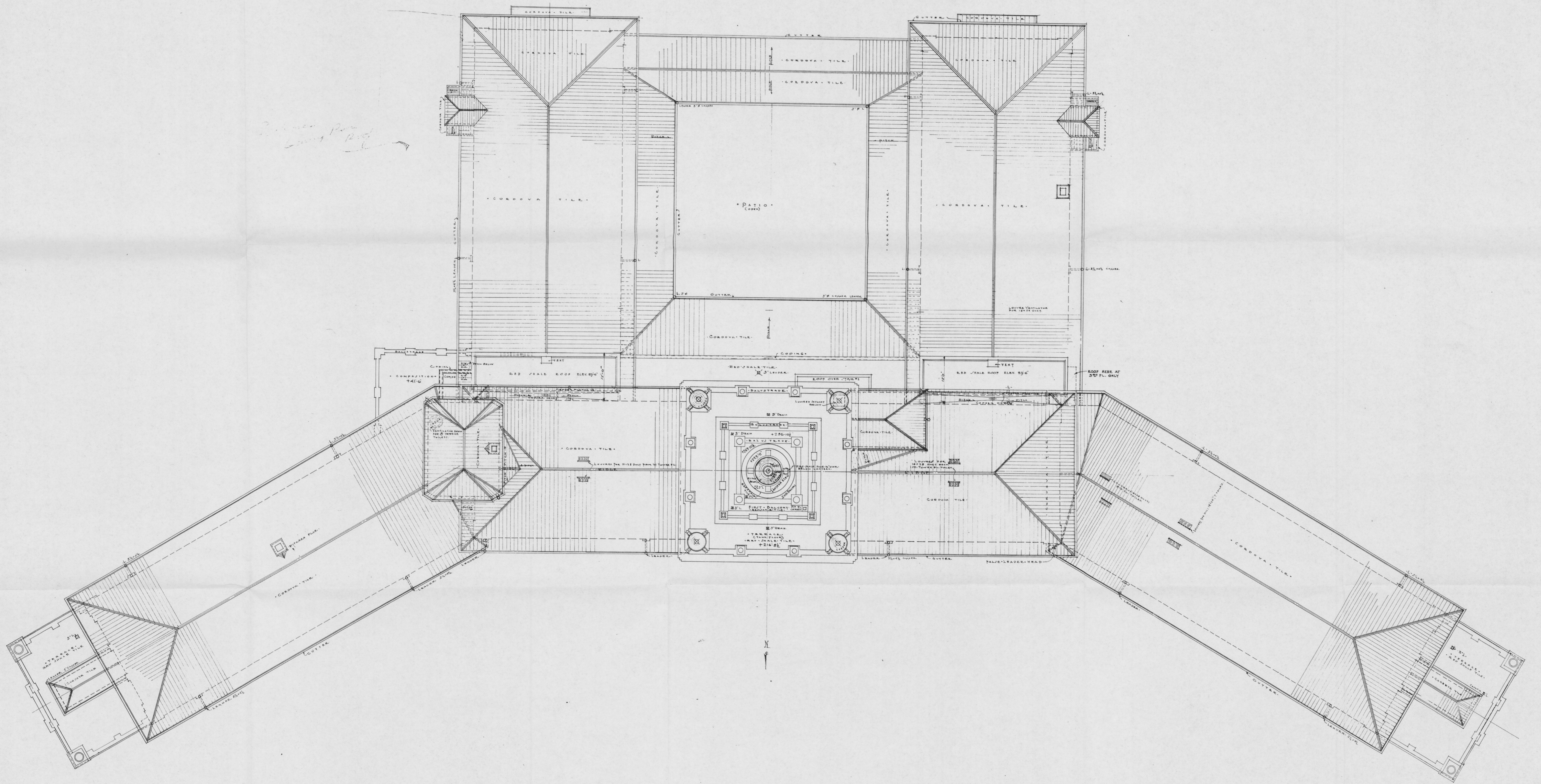
DESIGNED MAR. 16-1924
 REVISED APR. 15-22, MAY 10, 1924

NORTH ELEVATION

MIAMI BILTMORE HOTEL
 CORAL GABLES, FLORIDA

SCALE 1/8" = 1'-0"

Schulze and Weaver
 Architects
 17 EAST 69th STREET, NEW YORK CITY, N.Y.
 JOB N^o 63 DATE 12/3/24 DRAWING N^o 8



*2nd Floor Plan
Living Room*

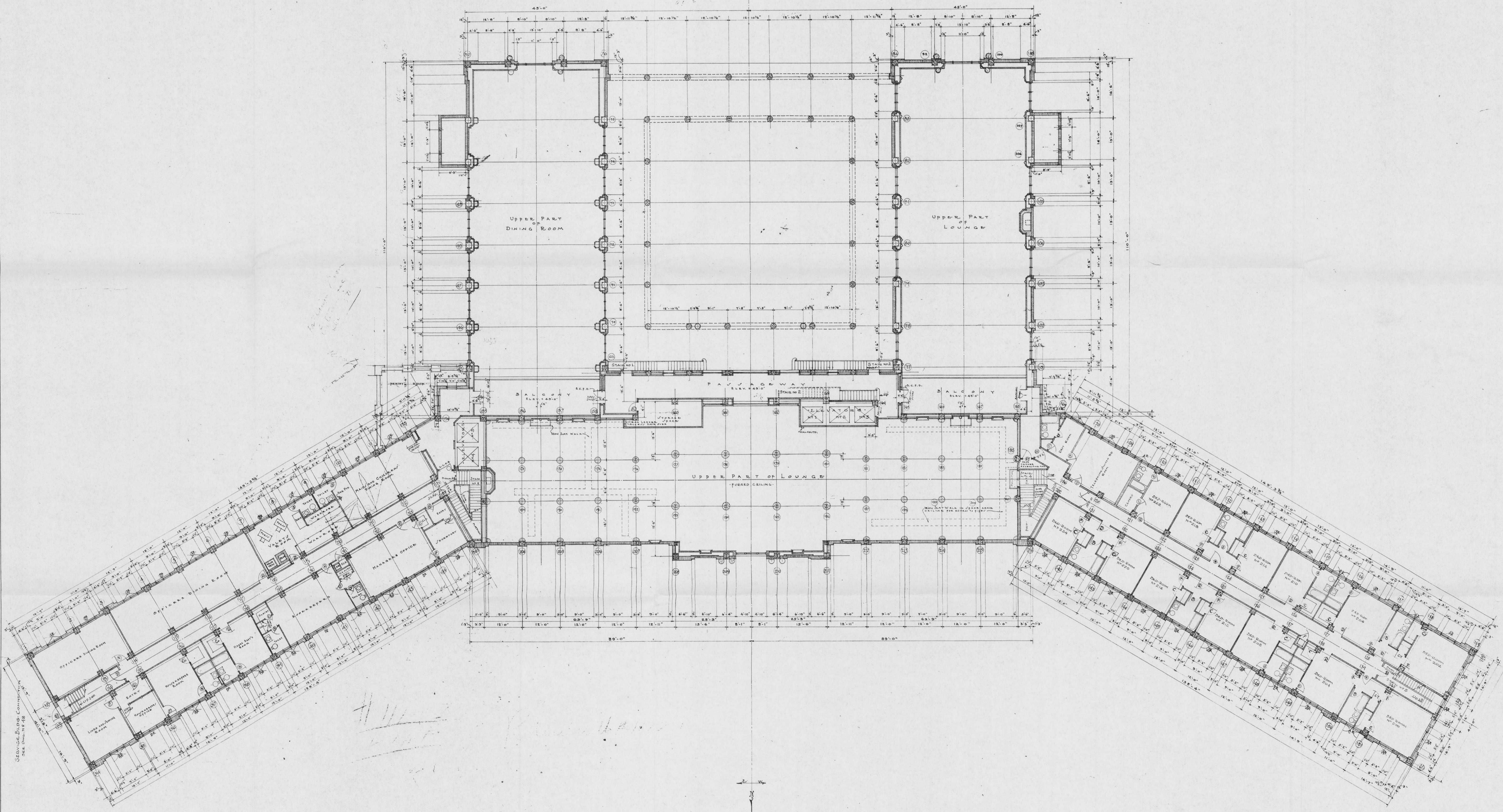
Revised March 1925

• ROOF PLANS •

SCALE 1/8"=1'-0"

MIAMI BILTMORE HOTEL
- CORAL GABLES, FLORIDA

Schulze and Weaver
Architects
17 EAST 87th STREET
NEW YORK CITY, NY
Job No 83 DATE JAN 31 1925 Draw No (22)



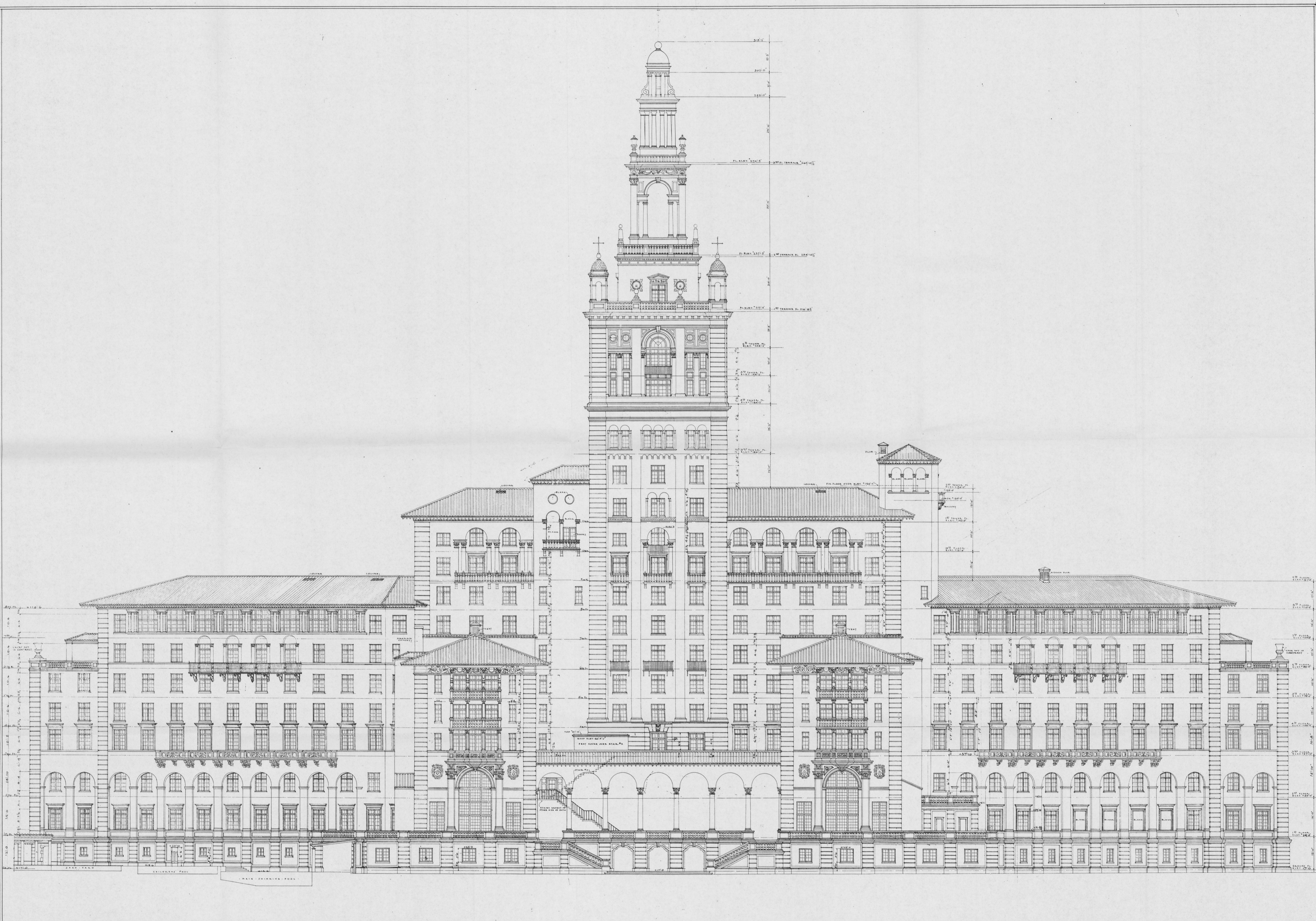
REV. MAY 10, 1925
 REV. APRIL 9, 1925
 REV. MAY 19, 1925

2ND FLOOR PLAN (MEZZANINE)

SCALE 1/8" = 1'-0"

MIAMI BILTMORE HOTEL
 CORAL GABLES, FLORIDA

Schulze and Weaver
 Architects
 17 EAST 49TH STREET, NEW YORK CITY, N.Y.
 JOB N^o 63 DATE 11/21/24 DRAWING N^o 4



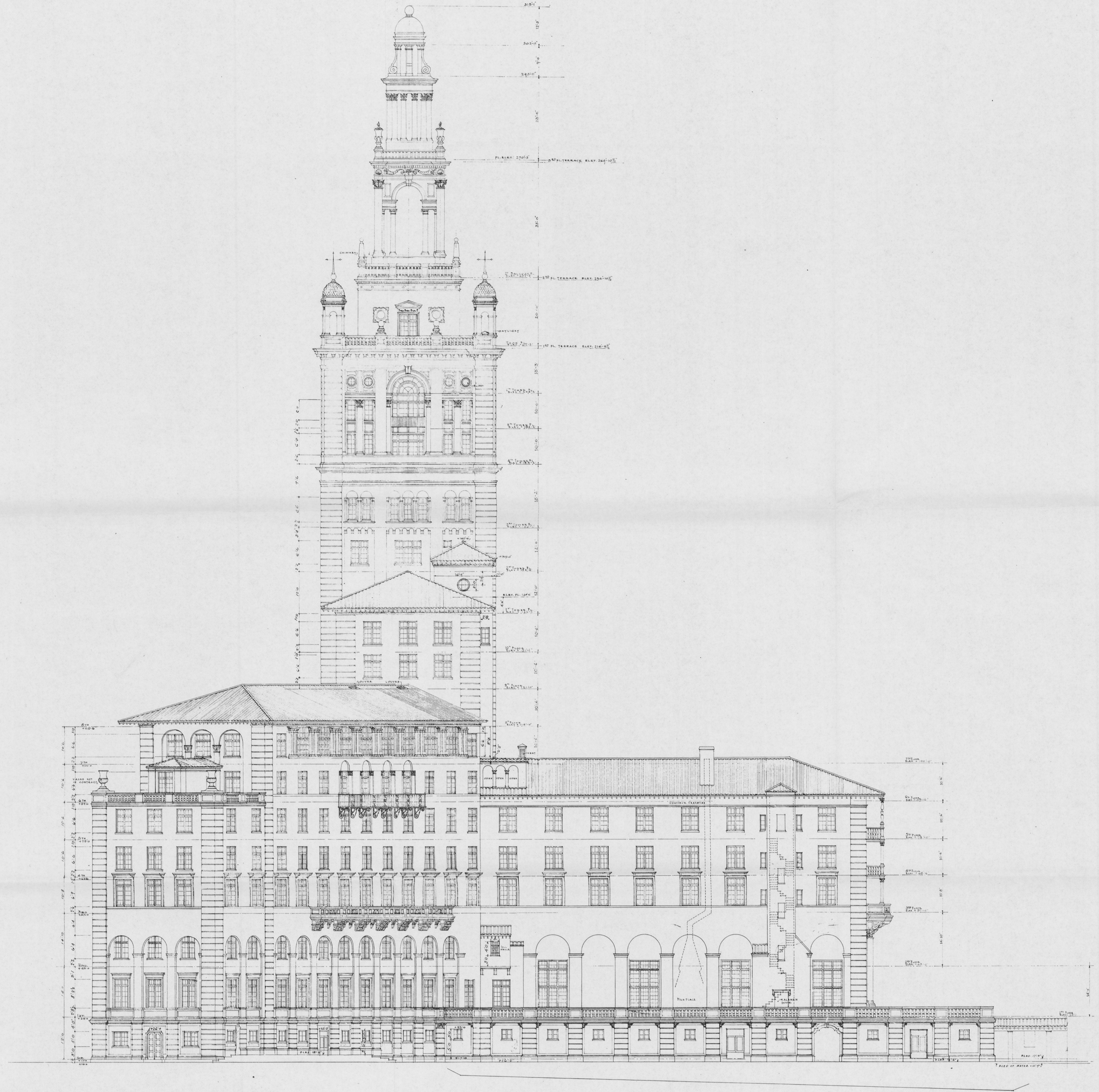
Revised Plans 10-11-22
Apr. 22-23 1924, P. A. ANDERSON

SOUTH ELEVATION

MIAMI BILTMORE HOTEL
CORAL GABLES, FLORIDA

SCALE 1/8" = 1'-0"

Schulze and Weaver
Architects
17 EAST 49th STREET, NEW YORK CITY, N.Y.
JOB NO. 63 DATE 4/24/24 DRAWING NO. 10



Revised Plans 1925
 1925 12 15 1925 11 15

WEST ELEVATION

SCALE 1/8" = 1'-0"

MIAMI BILTMORE HOTEL
 CORAL GABLES FLORIDA

Schulze and Weaver
 Architects
 17 EAST 43RD STREET
 NEW YORK CITY, N.Y.
 Job No. 83 DATE 4/14 DRAWN 11